

# MAKE JERRY CARE

HELP RESTORE FUNDING FOR CALIFORNIANS WITH DEVELOPMENTAL DISABILITIES

#KEEPTHEPROMISE

## A SAD STATE OF AFFAIRS

HOW GOVERNOR JERRY BROWN IS LETTING DOWN CALIFORNIANS WITH DEVELOPMENTAL DISABILITIES

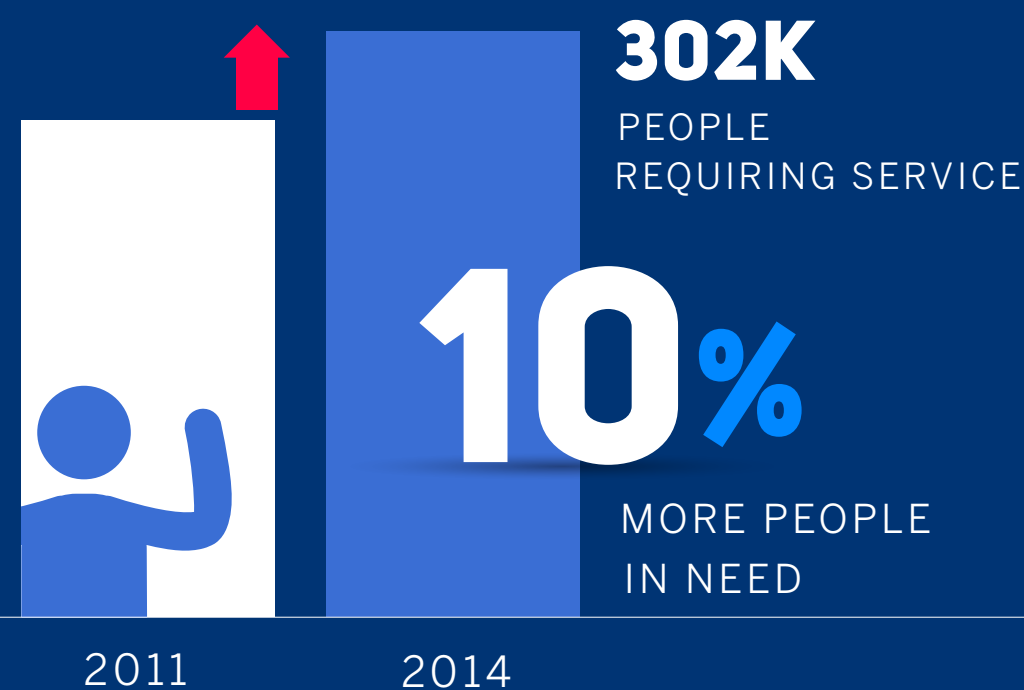
CALIFORNIA IS LAST IN THE NATION IN FUNDING ALLOCATED PER PERSON WITH DEVELOPMENTAL DISABILITIES<sup>1</sup>

**\$45k**  
AVG. WAIVER SPEND IN THE US

**\$22k**  
AVG. WAIVER SPEND IN CA

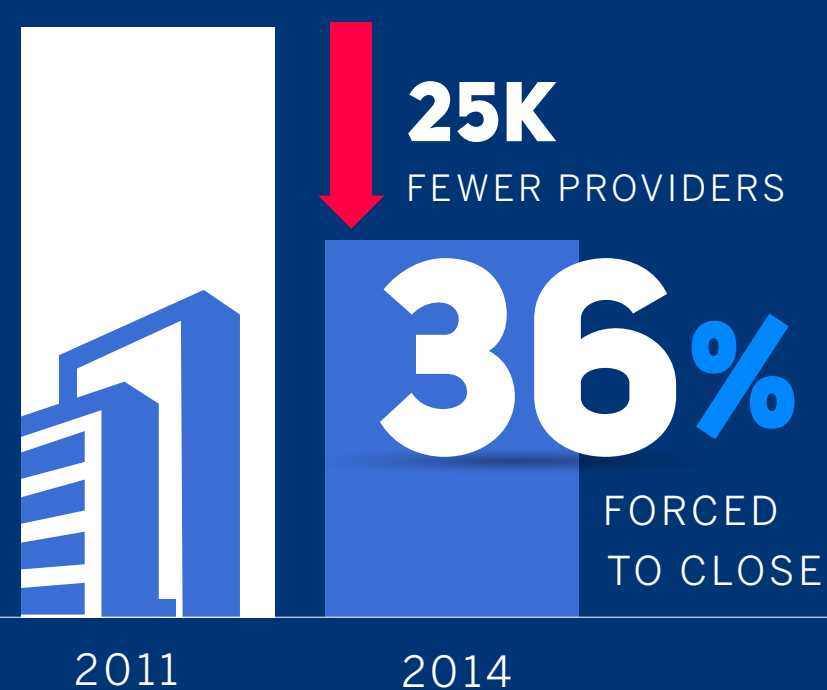
WAIVER SPENDING PER PARTICIPANT 2013

DE DC AK CT TN ME WV NJ NM NY PA RI MN VA LA MA OK MD IN NC VT MO AL NE WA WY NH USA MS NV AR OH CO MI MT KS HI UT TX KY WI GA IL OR ND LA SD SC FL AZ ID CA



CA HAS SEEN NEARLY A 10% INCREASE IN THE NUMBER OF PEOPLE REQUIRING SERVICES

**BUT...**



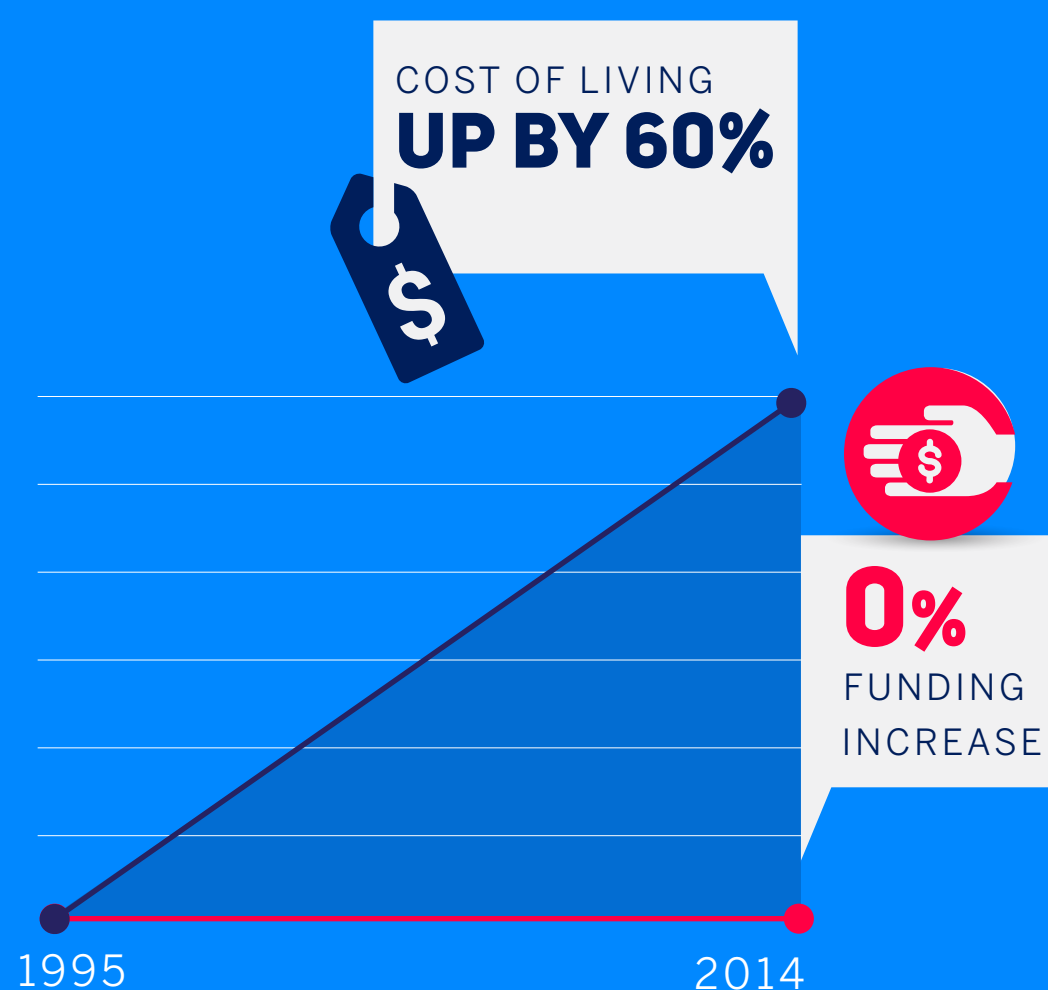
36% OF SERVICE PROVIDERS HAVE BEEN FORCED TO CLOSE DUE TO INSUFFICIENT FUNDING<sup>2</sup>

IF THIS RATE OF CLOSURES CONTINUES, THERE WILL BE ZERO CARE PROVIDERS BY THE YEAR 2025 IN CALIFORNIA.

ZERO CARE BY **2025**

### CURRENT FUNDING ISN'T CLOSE TO KEEPING UP WITH COST OF LIVING INCREASES

IN THE LAST 20 YEARS CA COST OF LIVING INCREASED **+60%**<sup>3</sup> WHILE FUNDING FOR INDIVIDUALS WITH DEVELOPMENTAL DISABILITIES DID NOT INCREASE AT ALL (**0%**)



THE DEVELOPMENTAL DISABILITIES SYSTEM NEEDS TO REINSTATE 10% HIGHER REIMBURSEMENT RATES TO STOP THE ONGOING DECLINE IN SERVICES THAT SUPPORT CALIFORNIA'S MOST VULNERABLE POPULATION.



CALIFORNIANS WITH DEVELOPMENTAL DISABILITIES NEED YOUR HELP TO ENSURE GOVERNOR BROWN RESTORES CRITICAL FUNDING IN THE 2016 STATE BUDGET.

**TWEET @JERRYBROWNGOV TO DEMAND A 10% INCREASE NOW!**

1. Association of Regional Center Agencies, "On the Brink of Collapse," 2015.  
2. California Department of Developmental Services, Fact Book, Twelfth Edition, 2015.  
3. California Department of Finance, Consumer Price Index (CPI) rate changes from 1995-2015: [http://www.dof.ca.gov/HTML/FS\\_DATA/LatestEconData/FS\\_Price.htm](http://www.dof.ca.gov/HTML/FS_DATA/LatestEconData/FS_Price.htm)

#MakeJerryCare